



Centre for
HEALTH SERVICES AND POLICY RESEARCH

Pedal to the Metal: How Canada's Medical Schools Hijacked the Future (Again)

Robert G. Evans

**Centre for Health Services and Policy
Research UBC**

March 4, 2008



College of Health Disciplines
THE UNIVERSITY OF BRITISH COLUMBIA

Figure 1: Canadian Medical Schools, 1960/61 to 2007/08

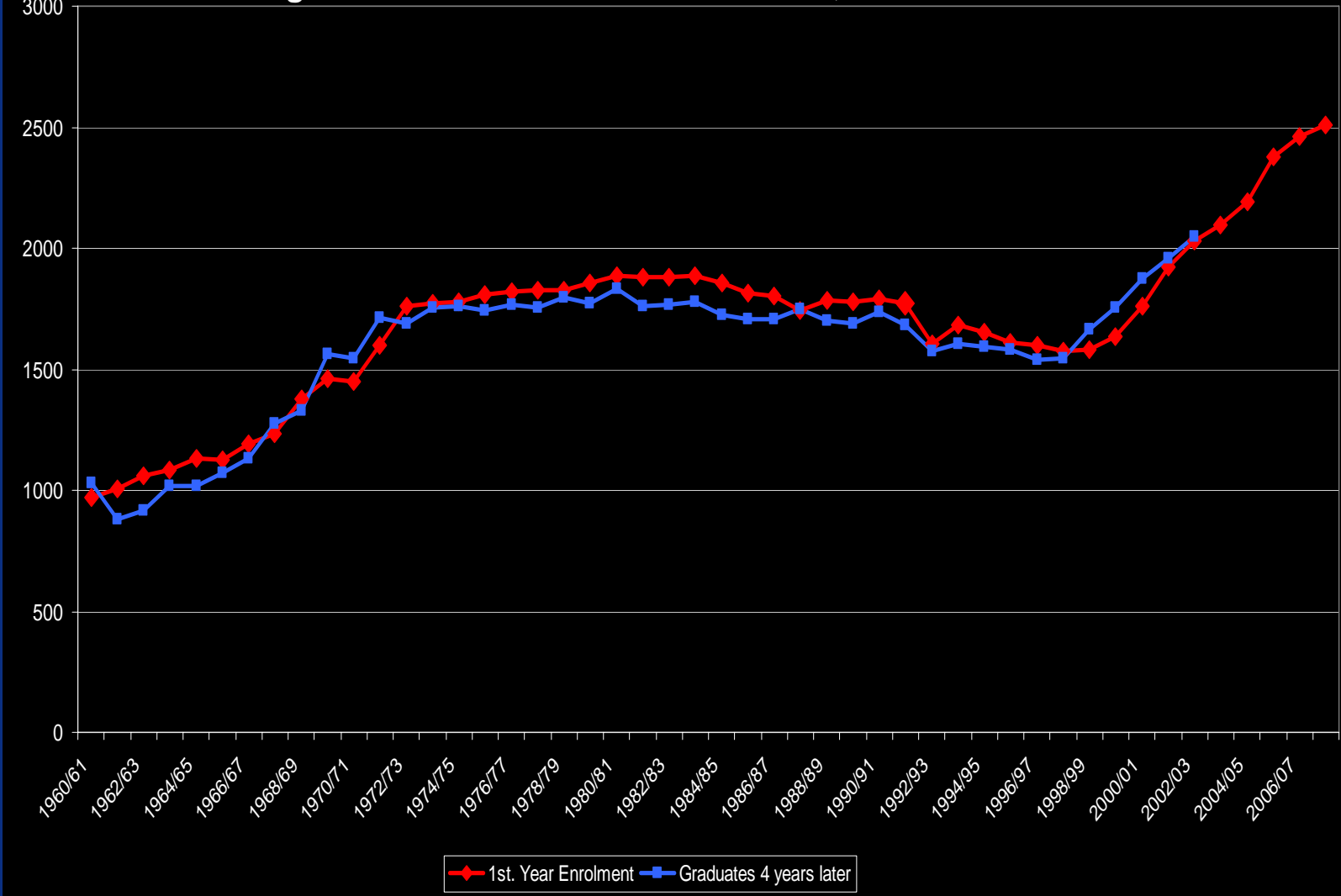
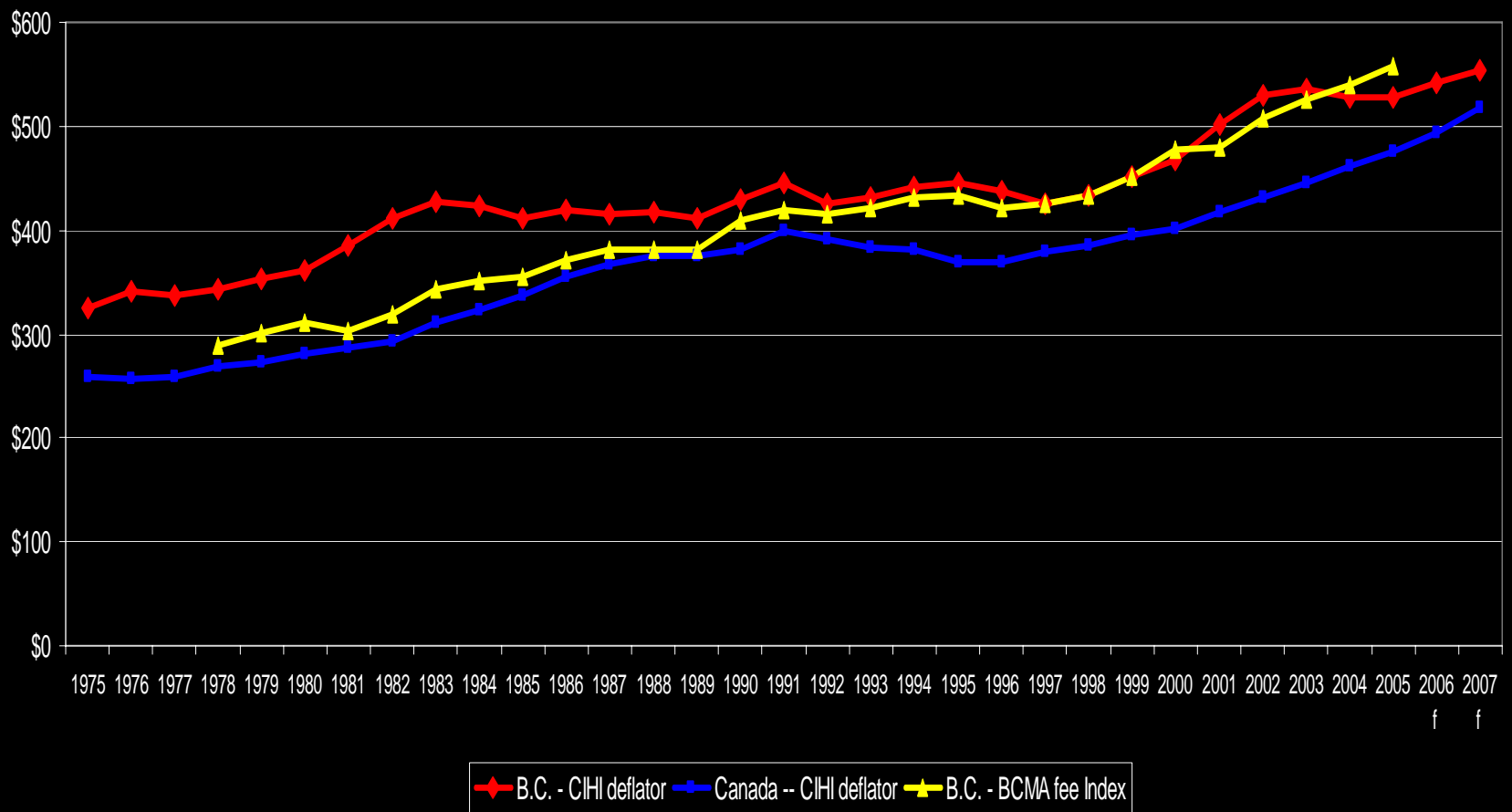


Figure 2: Expenditure on Physicians' Services, Canada and B.C., constant \$ per capita, 1975-2007



Growth in Expenditures per capita, B.C.1997\$, p.a., alternative deflators

	BCMA	CIHI
• 1978-2005	2.45%	1.61%
• 1978-1991	2.90%	2.02%
• 1991-2005	2.04%	1.22%
• 1991-1996	0.05%	-0.32%
• 1996-2005	3.17%	2.04%
• 2005-2007	--	2.44%

Figure 3: BCMA Index of Physicians' Fees, and CIHI National Deflator of Health Expenditures
(1997=100.0)

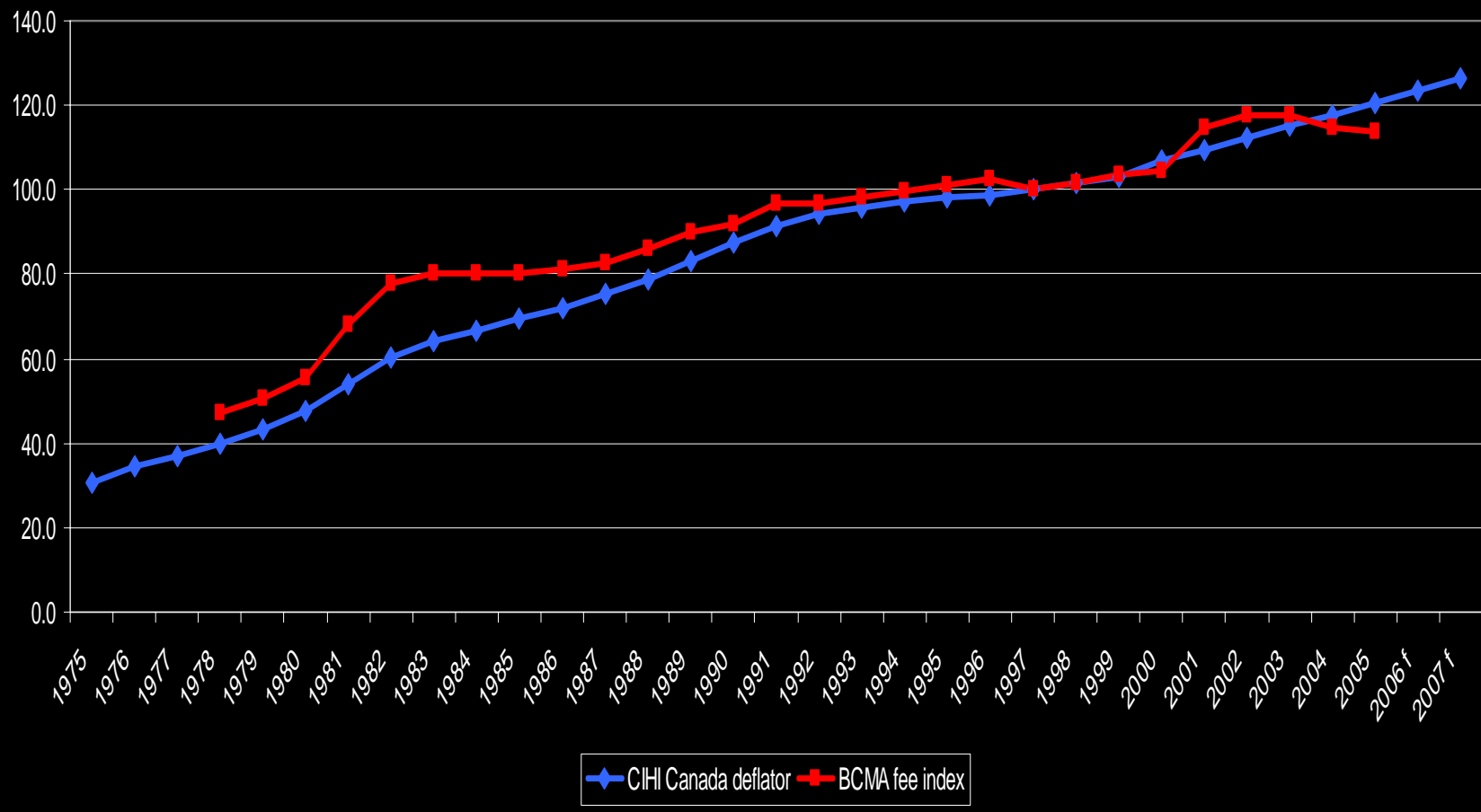


Figure 4: Expenditure on Physicians' Services, Canada and B.C., constant \$ per capita, 1960-2007

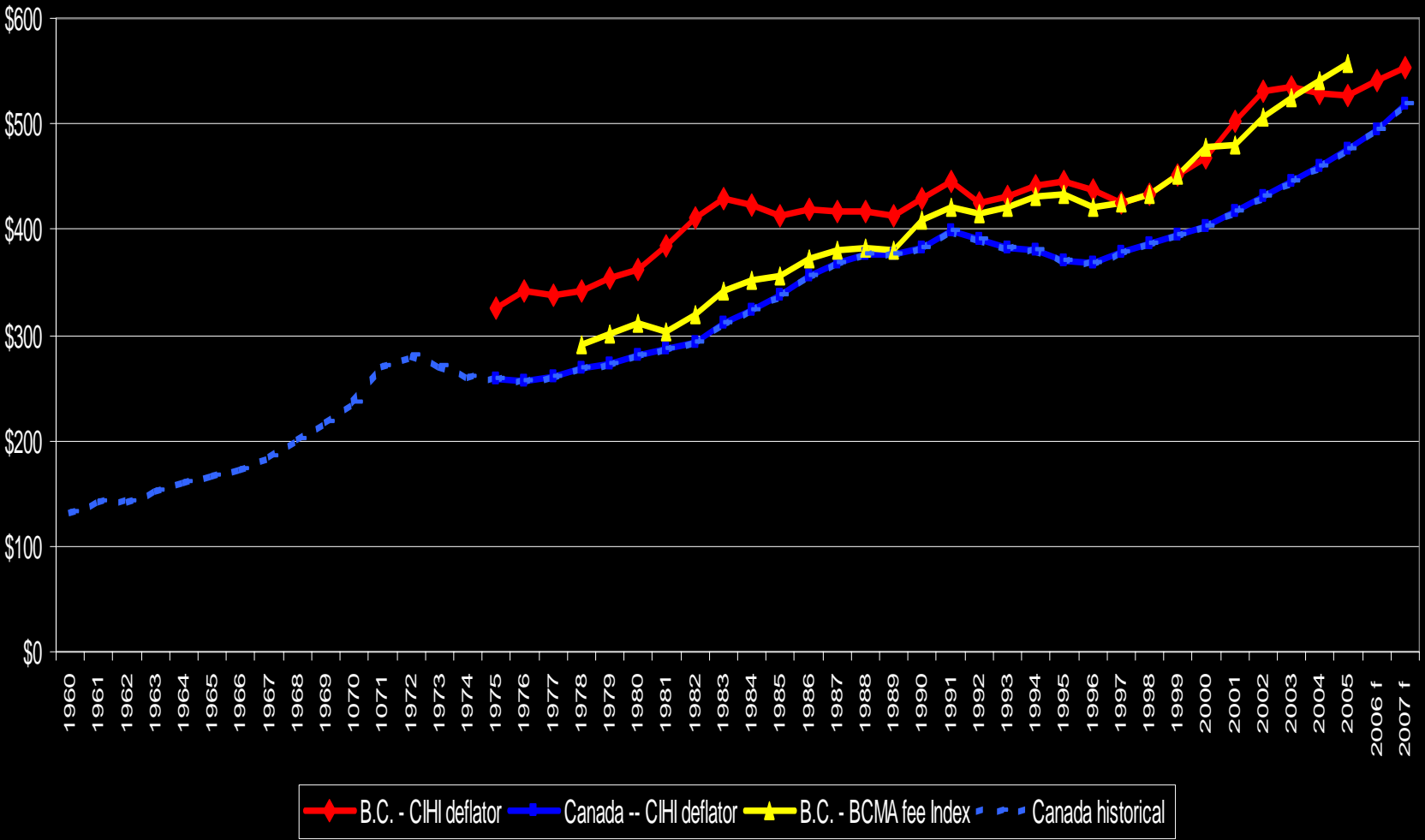


Figure 5: Canada, Physicians per 10,000 Population, 1968-2006

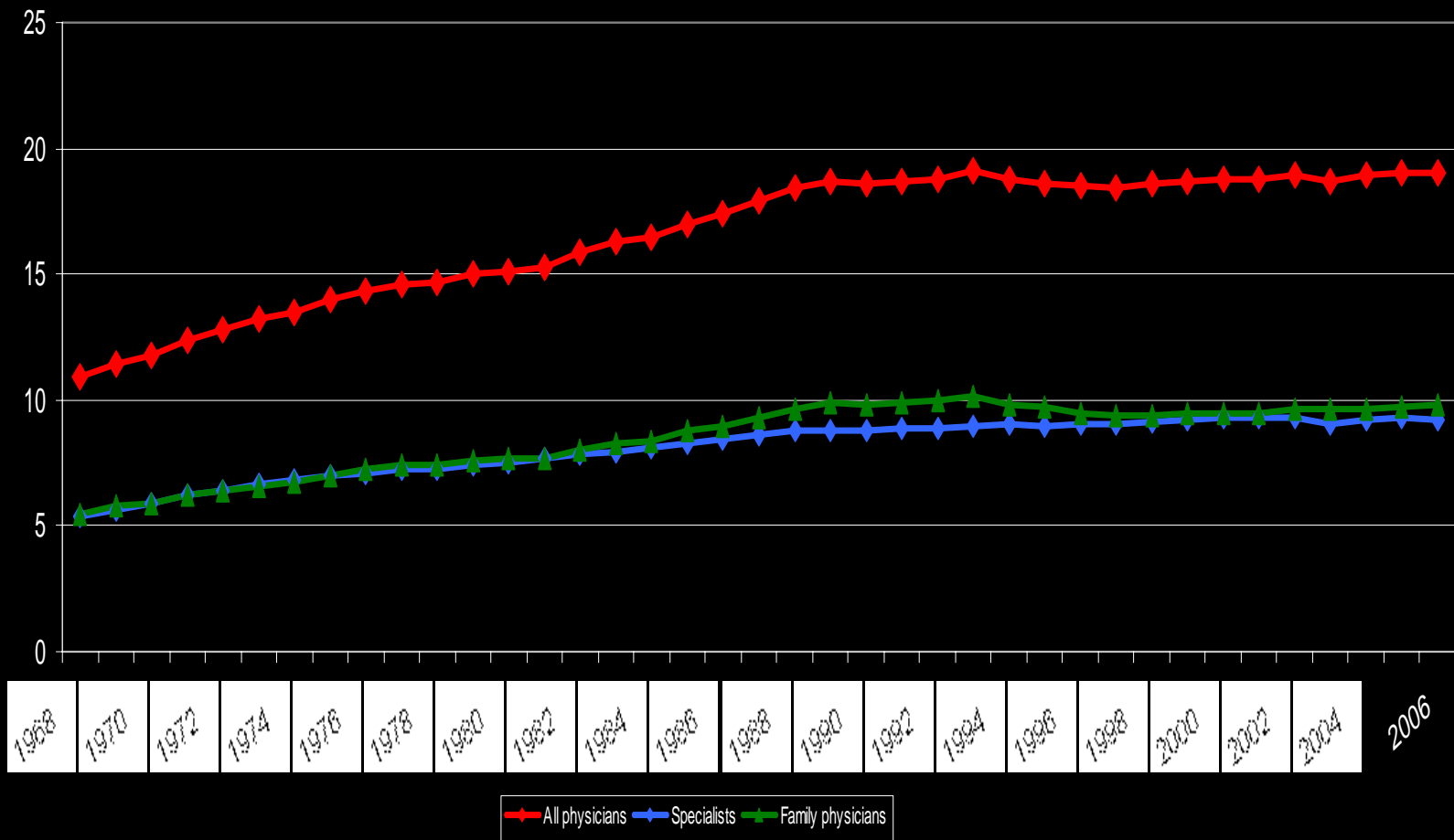


Figure 6: Canada, Physicians per 10,000 Population, 1968-2006

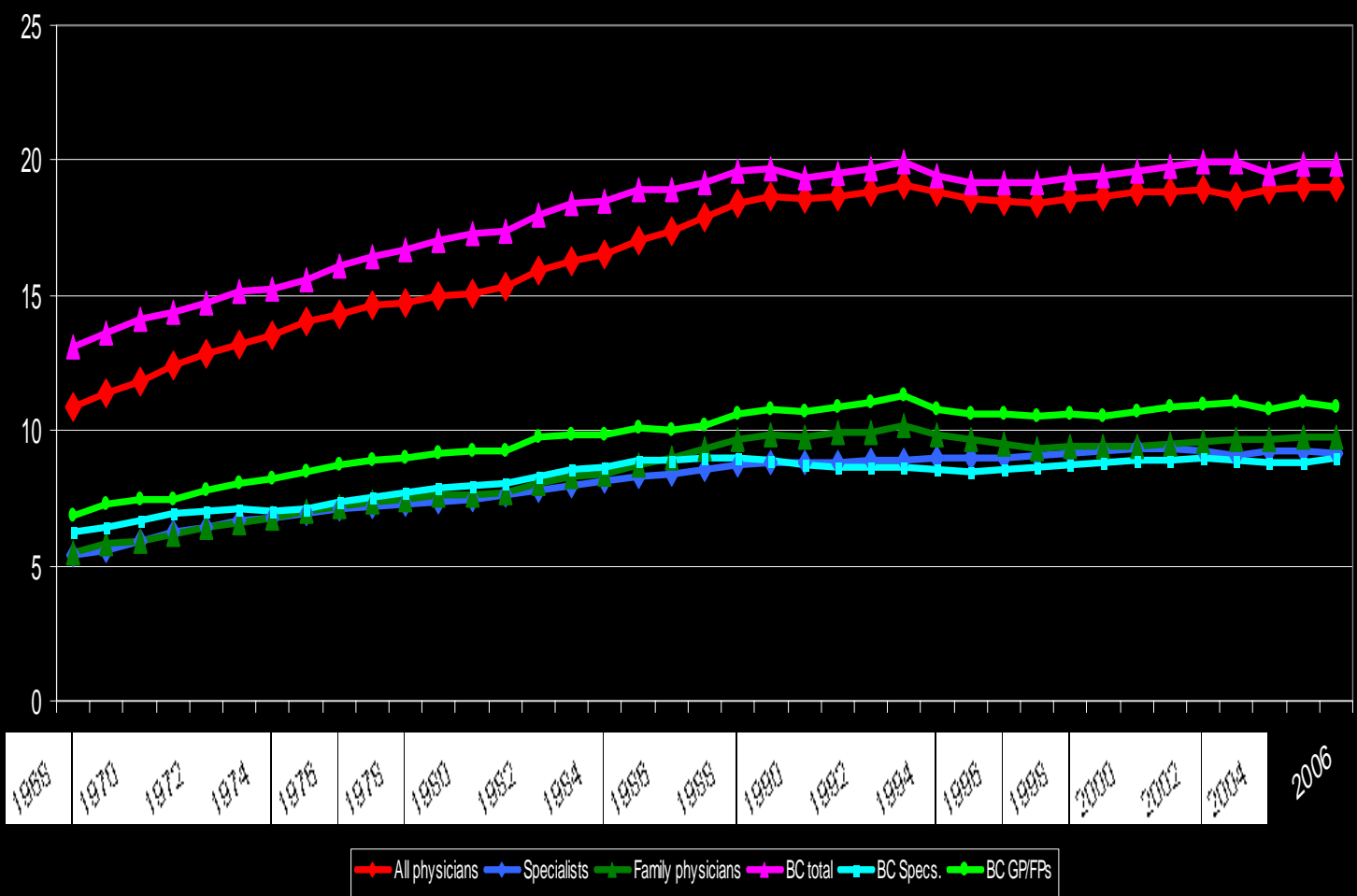
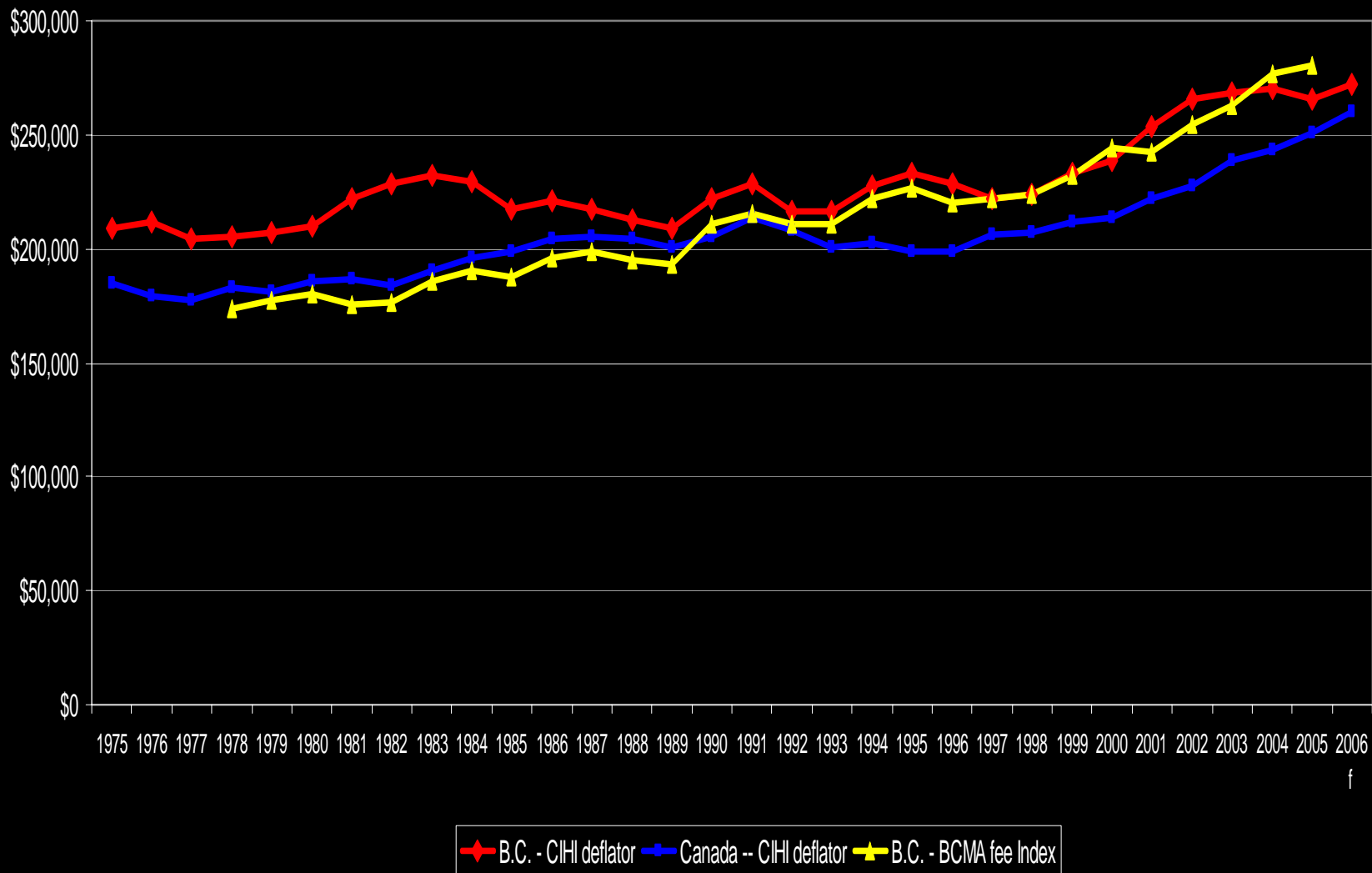


Figure 7: Expenditure per Physician, Canada and B.C., constant \$ per capita, 1975-2006



Growth in Expenditures per Physician, B.C.1997\$, p.a., alternative deflators

	BCMA	CIHI
• 1978-2005	1.79%	0.96%
• 1978-1991	1.68%	0.82%
• 1991-2005	1.90%	1.08%
• 1991-1996	0.38%	0.01%
• 1996-2005	2.76%	1.68%

Decline in Self-Reported Weekly Hours of Work, Canadian GP/FPs

- Watson et al. (1993-2003) 8.5%
- Crossley et al. (1982-2003) 15.6%